

Repairing a Philips NMS 1140 mouse with a used joystick cable

Original by: Bas Kornalijnslijper

Translated by: Bart Hamer

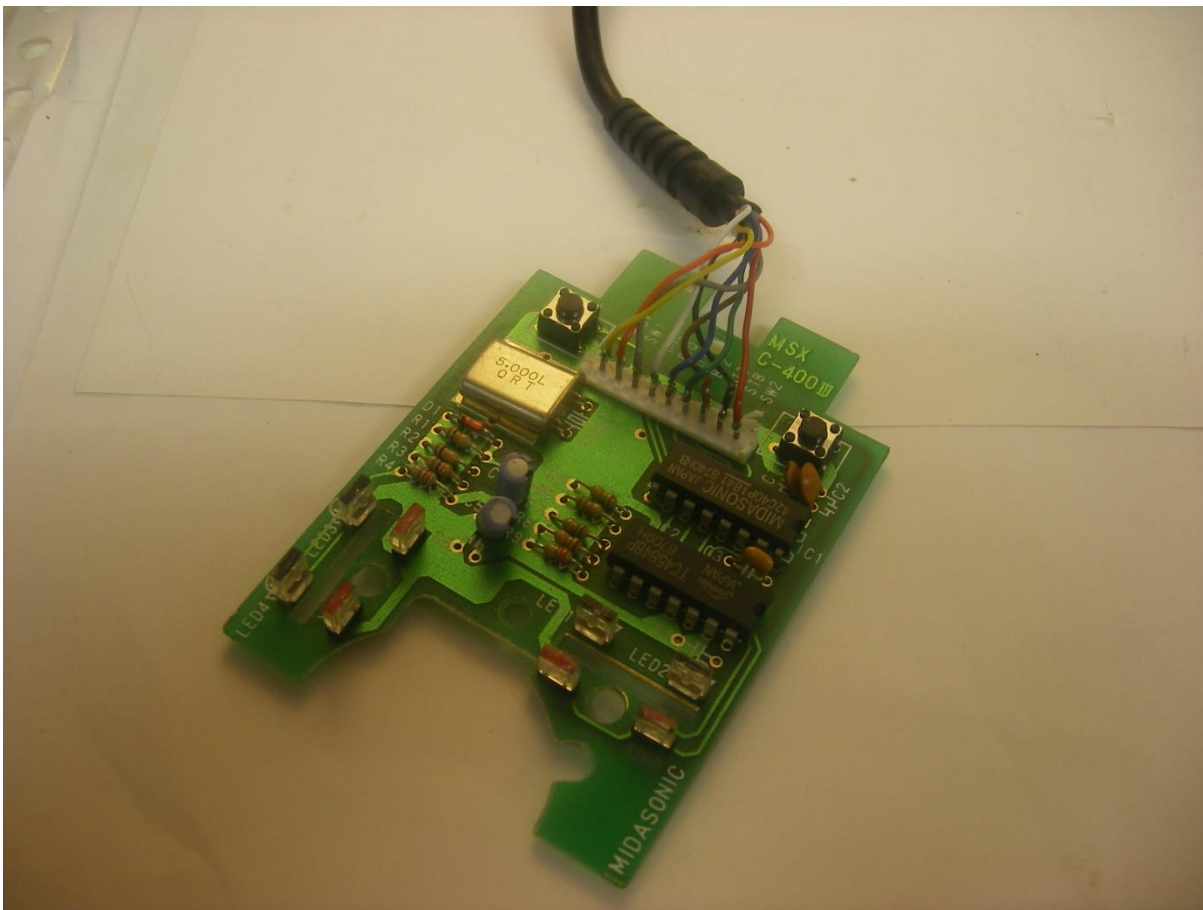


A Philips NMS 1140 mouse.

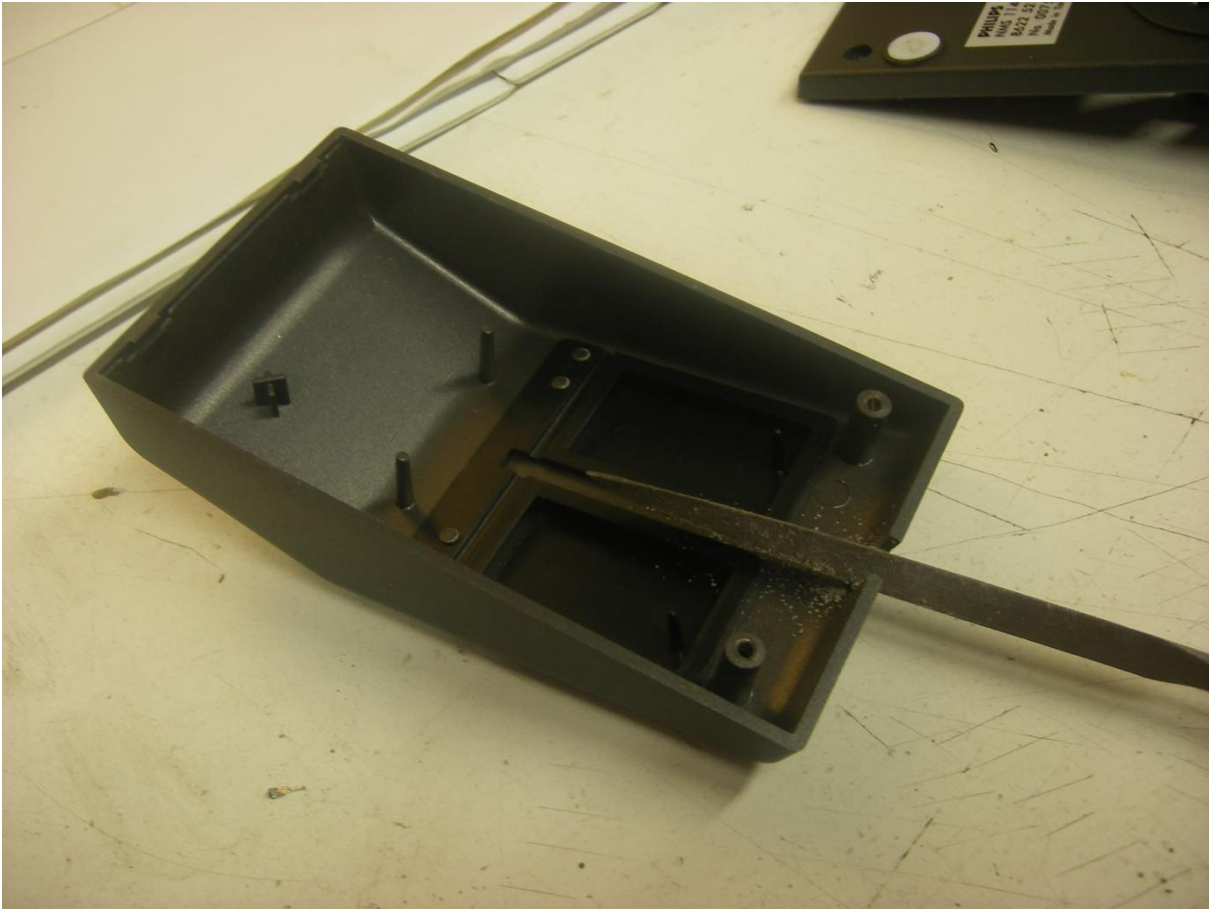
It often happens that the mouse no longer works. In most cases, cleaning the guide wheels is the solution. Cable breaks also occur regularly, but the original cables are no longer available. Instead of an original cable you can also use a 9 wire joystick cable. For instance, find an old Quickshot, Crackshot or Spectravideo joystick and make sure this works correctly. Carefully remove the cable from the joystick. The “new” cable will not have the right connector, but it can easily be soldered to the pins of the connector or soldered directly to the empty place of the connector.

- Unscrew the mouse.
- The cable can be easily detached, because it is connected with a connector.
- Remove the PCB.
- The part of the new cable that enters the mouse’s case may be a bit too big. This can be solved by adjusting the case.
- Solder the wires of the new cable to the pins of the connector or to the places on the PCB where they used to be. Solder them according to the diagram below. The yellow wire of the “new” cable is pin 1 (+5V DC).

SUB-D	Original cable wire color	Internal pin	Function	Replacement cable wire color
1	Black	4	Up	White
2	Brown	5	Down	Blue
3	White	6	Left	Green
4	Blue	7	Right	Brown
5	Orange	1	+5V DC	Yellow
6	Red	2	Button 1	Orange
7	Yellow	9	Button 2	Red
8	Purple	8	Output	Black
9	Green	3	Ground	Grey



The "new" cable soldered to the top side of the connector.



Adjusting the case for the "new" cable.