

128 kB RAM for the Philips NMS 8220

Original by: Bas Kornalijnslijper

Translated by: Bart Hamer



Warning:

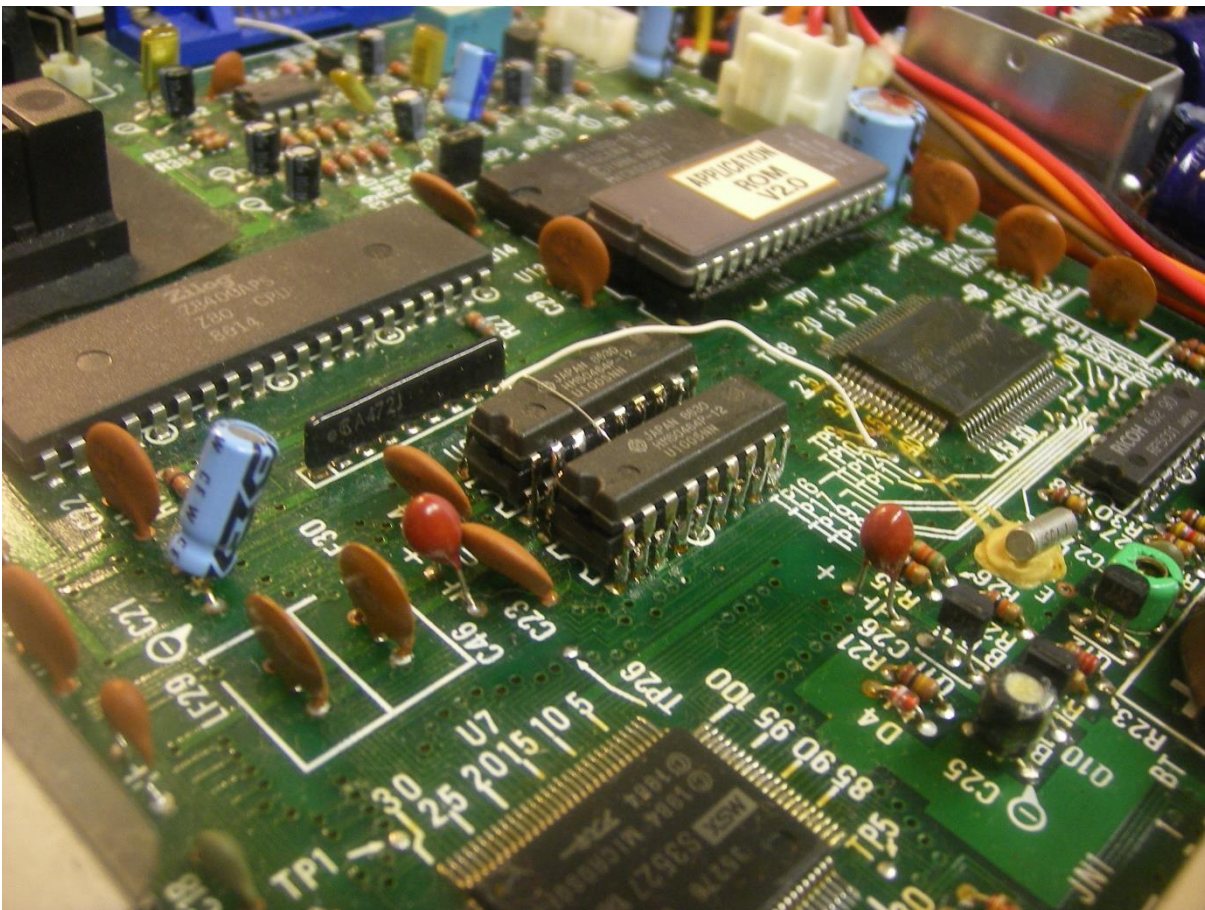
The most important part in the computer is the printed circuit board (PCB). Parts can be replaced, but not the PCB. Do not try to unsolder the parts, but cut them loose and then remove the solder pins. The use of IC sockets is recommended.

Requisites:

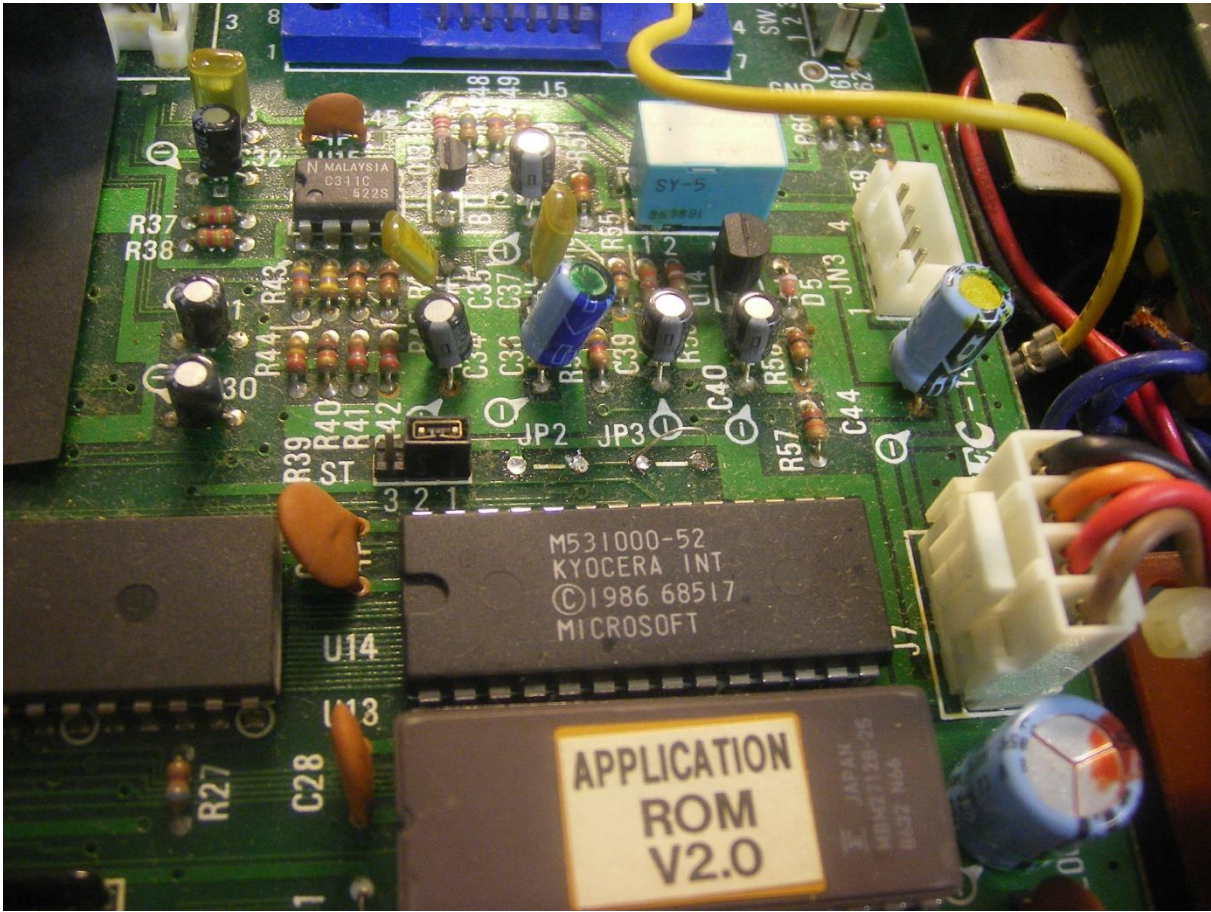
- 2 pieces 41464 (or equivalent)

Installation:

- Remove the top of the case.
- Remove the keyboard.
- Shorten pin 16 of the two additional memory chips (41464).
- Solder the remaining pins of one additional 41464 to the same pins of U8.
- Solder the remaining pins of the other additional 41464 to the same pins of U9.
- Use a wire to connect to connect pin 16 of both 41464s and connect it to TP9 (near U12).
- Remove JP2.
- Connect both ends of JP3 by soldering a wire bridge onto them.



The additional memory has been added with a connection to TP9.



JP2 has been removed and JP3 has been added.